

BRP44L Antibody (C-term)
Purified Rabbit Polyclonal Antibody (Pab)
Catalog # AP20857c**Specification**

BRP44L Antibody (C-term) - Product Information

Application	WB,E
Primary Accession	O9Y5U8
Reactivity	Human
Host	Rabbit
Clonality	Polyclonal
Isotype	Rabbit IgG

BRP44L Antibody (C-term) - Additional Information**Gene ID** 51660**Other Names**

Mitochondrial pyruvate carrier 1, Brain protein 44-like protein, MPC1, BRP44L

Target/Specificity

This BRP44L antibody is generated from a rabbit immunized with a KLH conjugated synthetic peptide between 96-129 amino acids from the C-terminal region of human BRP44L.

Dilution

WB~~1:1000

E~~Use at an assay dependent concentration.

Format

Purified polyclonal antibody supplied in PBS with 0.09% (W/V) sodium azide. This antibody is purified through a protein A column, followed by peptide affinity purification.

Storage

Maintain refrigerated at 2-8°C for up to 2 weeks. For long term storage store at -20°C in small aliquots to prevent freeze-thaw cycles.

Precautions

BRP44L Antibody (C-term) is for research use only and not for use in diagnostic or therapeutic procedures.

BRP44L Antibody (C-term) - Protein Information**Name** MPC1**Synonyms** BRP44L**Function** Mediates the uptake of pyruvate into mitochondria.

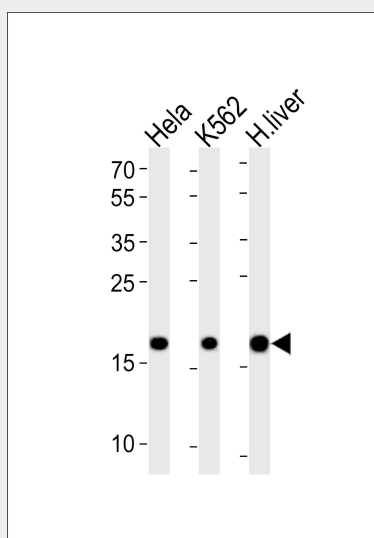
Cellular Location

Mitochondrion inner membrane; Multi-pass membrane protein

BRP44L Antibody (C-term) - Protocols

Provided below are standard protocols that you may find useful for product applications.

- [Western Blot](#)
- [Blocking Peptides](#)
- [Dot Blot](#)
- [Immunohistochemistry](#)
- [Immunofluorescence](#)
- [Immunoprecipitation](#)
- [Flow Cytometry](#)
- [Cell Culture](#)

BRP44L Antibody (C-term) - Images

Western blot analysis of lysates from HeLa, K562 cell line, human liver tissue (from left to right), using BRP44L Antibody (C-term) (Cat. #AP20857c). AP20857c was diluted at 1:1000 at each lane. A goat anti-rabbit IgG H&L (HRP) at 1:10000 dilution was used as the secondary antibody. Lysates at 20ug per lane.

BRP44L Antibody (C-term) - Background

Mediates the uptake of pyruvate into mitochondria.

BRP44L Antibody (C-term) - References

- Zhang Q.-H.,et al.Genome Res. 10:1546-1560(2000).
Lai C.-H.,et al.Genome Res. 10:703-713(2000).
Ota T.,et al.Nat. Genet. 36:40-45(2004).
Mungall A.J.,et al.Nature 425:805-811(2003).
Yu W.-Q.,et al.Submitted (JUN-2000) to the EMBL/GenBank/DDBJ databases.